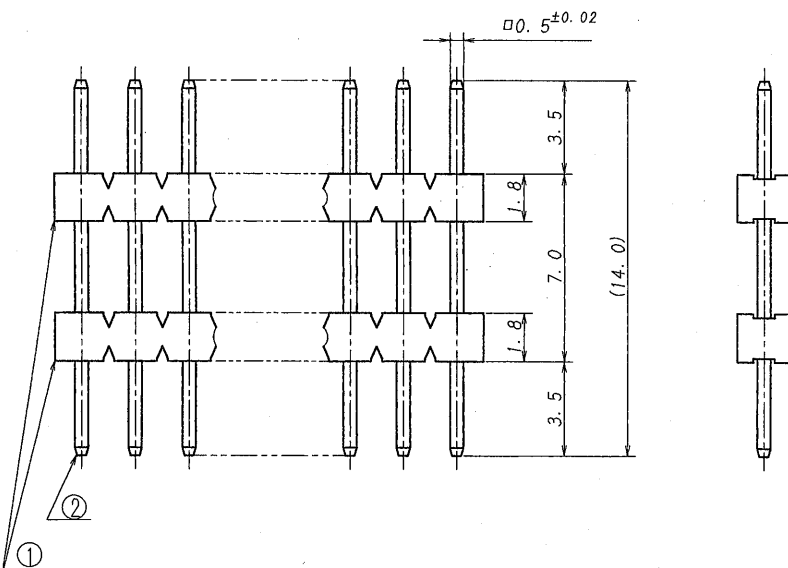
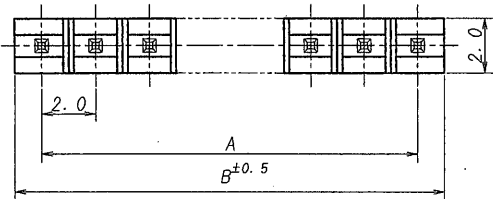


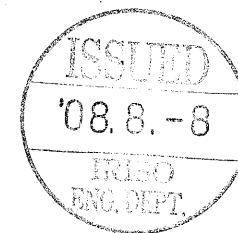
A B C D E F G H

| 極数 | 部品番号 | A | B | NOTE | 極数 | 部品番号 | A | B | NOTE |
|-----|---------------------|------|------|------|-----|---------------------|------|------|------|
| CKT | PARTS No. | | | | CKT | PARTS No. | | | |
| 2 | 9210B-1-02ZA262-PT1 | 2.0 | 3.9 | | 18 | 9210B-1-18ZA262-PT1 | 34.0 | 35.9 | |
| 3 | -03 | 4.0 | 5.9 | | 19 | -19 | 36.0 | 37.9 | |
| 4 | -04 | 6.0 | 7.9 | | 20 | -20 | 38.0 | 39.9 | |
| 5 | -05 | 8.0 | 9.9 | | 21 | -21 | 40.0 | 41.9 | |
| 6 | -06 | 10.0 | 11.9 | | 22 | -22 | 42.0 | 43.9 | |
| 7 | -07 | 12.0 | 13.9 | | 23 | -23 | 44.0 | 45.9 | |
| 8 | -08 | 14.0 | 15.9 | | 24 | -24 | 46.0 | 47.9 | |
| 9 | -09 | 16.0 | 17.9 | | 25 | -25 | 48.0 | 49.9 | |
| 10 | -10 | 18.0 | 19.9 | | 26 | -26 | 50.0 | 51.9 | |
| 11 | -11 | 20.0 | 21.9 | | 27 | -27 | 52.0 | 53.9 | |
| 12 | -12 | 22.0 | 23.9 | | 28 | -28 | 54.0 | 55.9 | |
| 13 | -13 | 24.0 | 25.9 | | 29 | -29 | 56.0 | 57.9 | |
| 14 | -14 | 26.0 | 27.9 | | 30 | -30 | 58.0 | 59.9 | |
| 15 | -15 | 28.0 | 29.9 | | 31 | -31 | 60.0 | 61.9 | |
| 16 | -16 | 30.0 | 31.9 | | 32 | 9210B-1-32ZA262-PT1 | 62.0 | 63.9 | |
| 17 | 9210B-1-17ZA262-PT1 | 32.0 | 33.9 | | | | | | |



仕様

- 1. 最大定格電圧電流 : 250V, 3A (AC, DC)
- 2. 使用温度範囲 : -40~+105℃



NOTE

- 1. MAXIMUM RATING VOLTAGE AND CURRENT : 250V, 3A (AC, DC)
- 2. TEMPERATURE RANGE : -40℃~+105℃

| | | | | | | | | | |
|--------|--------|-------------------|-----|-----|--|-------------------------|-----------------------------|--------------|------------------------|
| △ | | | | | MATERIAL 材質 | GENERAL TOLERANCES 一般公差 | SCALE 尺度 | UNIT 単位 | TITLE 名称 |
| △ | | | | | ① ベース: ガラス入り46ナイロン繊維 自然色 (アイボリー) UL94V-0 | DIM 寸法 ± 0.3 | DR '08-7-29 | mm | 9210シリーズ ピンヘッダー |
| △ | | | | | ① BASE : GLASS FILLED 46NYLON | ANGLE 角度 ± | J. Oguro | DSN '08-7-29 | SERIES 9210 PIN HEADER |
| △ | | | | | UL94V-0 COLOR: NATURAL (IVORY) | | M. TAKAGI | J. Oguro | EDP No |
| △ | | | | | ② 端子/PIN : 黄銅/BRASS | 3RD. ANG. PROJ. 三角法 | CHK '08-7-30 | APP '08-7-31 | PARTS No 部番 |
| △ | | | | | FINISH 仕上げ | | M. TAKAGI | G. Saouki | 9210B-1-**ZA262-PT1 |
| △ | | | | | 前ゆっき/PRE-PLATE | | IRISO ELECTRONICS CO., LTD. | | |
| △ | | | | | (ニッケル下地ゆっき/OVER NICKEL PLATE 1.0μmMIN. | | IRISO 電子工業株式会社 | | |
| △ | | | | | スズリフローゆっき/TIN REFLOW PLATE 2.0μmMIN. | | DWG No 図番 | | |
| LTR 記号 | ECN NO | REVISION RECORD 記 | DR | CHK | DATE 年月日 | | IMSA-9210B-1-**ZA262-PT1 | | |
| | | RELEASED | J.O | MT | '08 | | REV. | | |