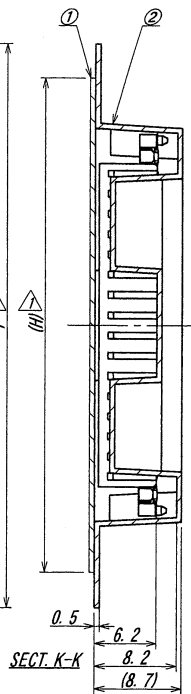
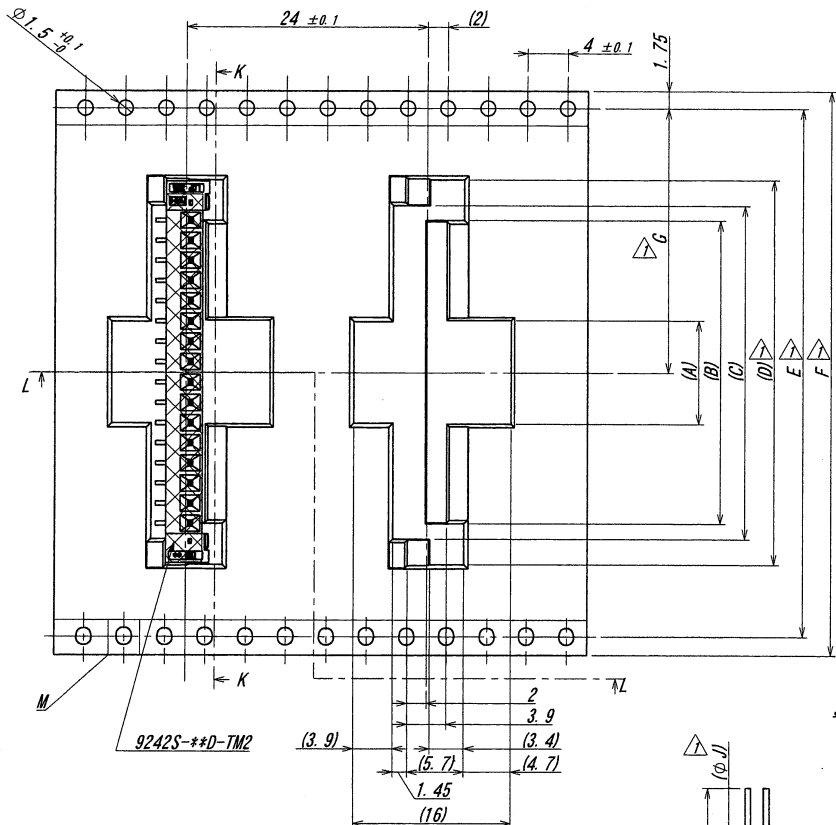
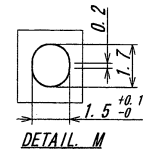


A B C D E F G H

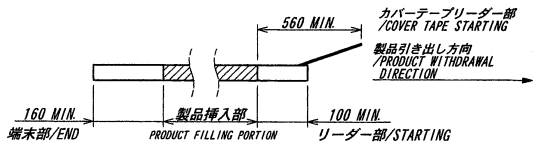
製品引き出し方向
/PRODUCT WITHDRAWAL DIRECTION



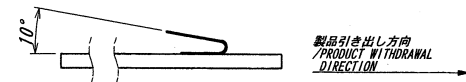
極数 /CKT	梱包品番 PACKING No.	A	B	C	D	E	F	G	H	J
6	9242S-06Y911	6.2	10.2	12.8	18.1	28.4	32.0	14.2	26.0	80
7	9242S-07Y911		12.2	14.8	20.1					
8	9242S-08Y911		14.2	16.8	22.1					
9	9242S-09Y911		16.2	18.8	24.1					
10	9242S-10Y911		18.2	20.8	26.1					
11	9242S-11Y911		20.2	22.8	28.1					
12	9242S-12Y911		22.2	24.8	30.1					
13	9242S-13Y911		24.2	26.8	32.1					
14	9242S-14Y911		26.2	28.8	34.1					
15	9242S-15Y911		28.2	30.8	36.1					
16	9242S-16Y911	10.0	30.2	32.8	38.1	52.4	56.0	26.2	49.0	100
17	9242S-17Y911		32.2	34.8	40.1					
18	9242S-18Y911		34.2	36.8	42.1					
19	9242S-19Y911		36.2	38.8	44.1					
20	9242S-20Y911		38.2	40.8	46.1					
21	9242S-21Y911		40.2	42.8	48.1					
22	9242S-22Y911		42.2	44.8	50.1					
23	9242S-23Y911		44.2	46.8	52.1					
24	9242S-24Y911		46.2	48.8	54.1					
25	9242S-25Y911		48.2	50.8	56.1					
26	9242S-26Y911	50.2	52.8	58.1						
27	9242S-27Y911	52.2	54.8	60.1						
28	9242S-28Y911	54.2	56.8	62.1	64.4	68.0	42.2	82.0		



NOTE
1. 梱包数量/UNIT QUANTITY : 400
2. リードテープ長さ/LEAD TAPE LENGTH



3. カバーテープの剥離強度/COVER TAPE PEELING FORCE : 0.2~1.3N



ISSUED
15.6.22
IRISO
ENG.DEPT.

IRISO 記号	BCN No	REVISION RECORD 記	DR	CHK	DATE 年月日
50/22	NOTE REV	Y.K	Zu		'15-6-17
48/7/1	RELEASED	Y.K	Zu		'14-10-3
—	SKETCHED	Y.K	I.U		'14-9-8

MATERIAL 材質
①カバーテープ/COVER TAPE : PET TYPE
②キャリアテープ/CARRIER TAPE : PS
③リール/REEL : PS (黒/BLACK)

FINISH 仕上げ

GENERAL TOLERANCES 一般公差
DIM 寸法 ± 0.3
ANGLE 角度 ±
3RD. ANG. PROJ. 三角法

SCALE 尺度
DR '14-10-3
Y. KOJIMA
CHK 1/8" 1/4 Su a
UNIT 単位
MM
DSN '13-6-7
T. DOI
APP 1/8 M. Yabiku

IRISO ELECTRONICS CO., LTD
イリソ電子工業株式会社

TITLE 名称
9242シリーズ ソケット エンボス梱包品
SERIES 9242 SOCKET EMBOSS PRODUCT
EDP No
PARTS No 部番
IMSA-9242S-**-Y911
DWG No 図番
120-109242-003
REV.
2