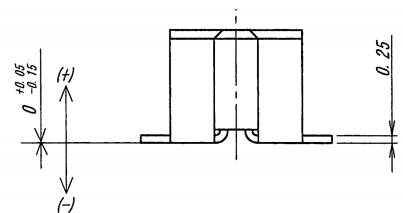
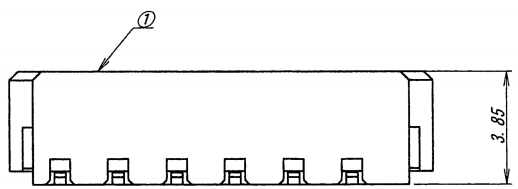
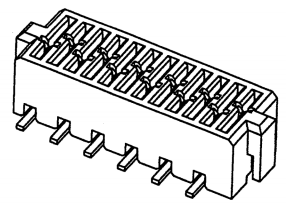
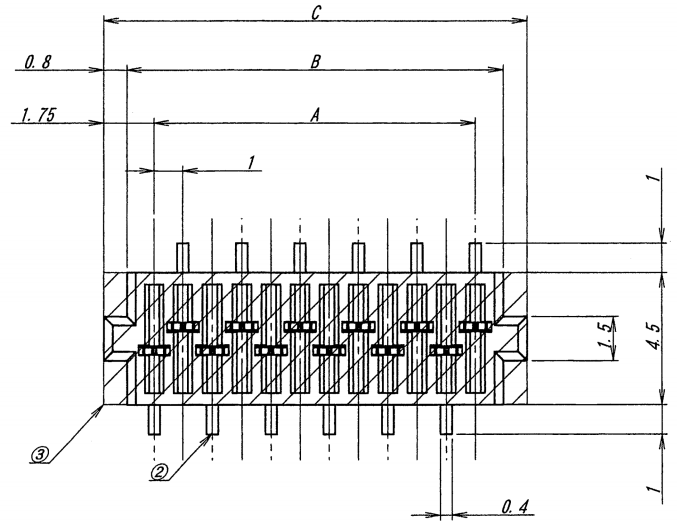
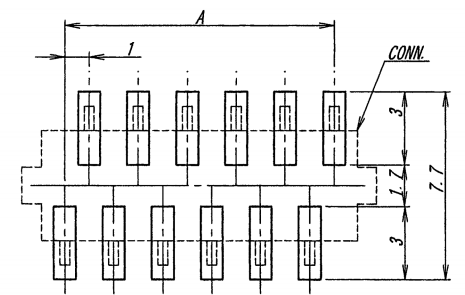


A B C D E F G H



| 極数/CKT | 部品番号/PARTS No. | A    | B    | C    |
|--------|----------------|------|------|------|
| 6      | 9851S-06F-TMN1 | 5.0  | 6.9  | 8.5  |
| 8      | 9851S-08F-TMN1 | 7.0  | 8.9  | 10.5 |
| 10     | 9851S-10F-TMN1 | 9.0  | 10.9 | 12.5 |
| 12     | 9851S-12F-TMN1 | 11.0 | 12.9 | 14.5 |
| 14     | 9851S-14F-TMN1 | 13.0 | 14.9 | 16.5 |
| 16     | 9851S-16F-TMN1 | 15.0 | 16.9 | 18.5 |
| 18     | 9851S-18F-TMN1 | 17.0 | 18.9 | 20.5 |
| 20     | 9851S-20F-TMN1 | 19.0 | 20.9 | 22.5 |
| 22     | 9851S-22F-TMN1 | 21.0 | 22.9 | 24.5 |
| 24     | 9851S-24F-TMN1 | 23.0 | 24.9 | 26.5 |
| 26     | 9851S-26F-TMN1 | 25.0 | 26.9 | 28.5 |
| 28     | 9851S-28F-TMN1 | 27.0 | 28.9 | 30.5 |
| 30     | 9851S-30F-TMN1 | 29.0 | 30.9 | 32.5 |

NOTE  
 1. コプラナリティ/COPLANARITY : 0.1mmMAX.  
 2. 本製品は、錫系めっきを施しておりますので、ウイスキーが発生する可能性が御座います。その為、ウイスキー発生に対する保証は困難であり、御社にて御判断の上御使用を御願いたします。/ THIS PRODUCT UTILIZES LEAD-FREE TIN PLATING. ANY PRODUCT WITH LEAD-FREE TIN PLATING IS SUSCEPTIBLE TO TIN WHISKER. IRISO PROVIDES NO ASSURANCES AGAINST THE GROWTH OF TIN WHISKER EVEN UNDER NORMAL OPERATING CONDITIONS. CUSTOMERS ASSUME ALL RESPONSIBILITY FOR ANY PRODUCT FAILURES DUE SOLELY TO THE GROWTH OF TIN WHISKERS.



推奨基板寸法  
 一般公差 : ±0.05 基板厚 : 1.6mm (マウント面)  
 RECOMMENDED PCB SIZE  
 GENERAL TOLERANCE : ±0.05  
 THICKNESS OF PCB : 1.6mm (MOUNTING SIDE)

ISSUED  
 16.4.20  
 IRISO  
 ENG.DEPT.

|   |        |                   |      |     |          |  |   |                                       |                         |   |
|---|--------|-------------------|------|-----|----------|--|---|---------------------------------------|-------------------------|---|
| △ |        |                   |      |     |          | MATERIAL 材質<br>①ハウジング : ガラス入り9Tナイロン樹脂 黒色 UL94V-0<br>②端子 : リン青銅 (t=0.25)<br>③吸着テープ : ポリイミド<br>④HOUSING : GLASS FILLED 9TNYLON BLACK UL94V-0<br>⑤CONTACT : PHOSPHOR BRONZE (t=0.25)<br>⑥TAPE : POLYIMYDE | GENERAL TOLERANCES 一般公差<br>DIM 寸法 ± 0.3<br>ANGLE 角度 ± | SCALE 尺度 /<br>DR '16-04-13<br>R. Arai | UNIT 単位 mm              | TITLE 名称<br>9851シリーズ ソケット<br>SERIES 9851 SOCKET |
| △ |        |                   |      |     |          | FINISH 仕上げ<br>ニッケル下地めっき/OVER Ni PLATE<br>接点部/CONTACT AREA : 2~5.4mm<br>テール部/TAIL AREA : 1~3.4mm<br>錫半光沢めっき/TIN MATT PLATE<br>接点部/CONTACT AREA : 3~6.4mm<br>テール部/TAIL AREA : 1~6.4mm                    | 3RD. ANG. PROJ. 三角法<br>                               | CHK 76<br>4/13 M. Takagi U. Sawak     | DSN '07-08-07<br>Shioda | EDP No  |
| △ |        |                   |      |     |          |  |   |                                       | APP 2016-11-14          | PARTS No 部番<br>IMSA-9851S-#*F-TMN1              |
| △ |        |                   |      |     |          |  |   |                                       |                         | DWG No 図番<br>110-409851-550                     |
| △ |        |                   |      |     |          |  |   |                                       |                         | REV.<br>0                                       |
| △ | 51634  | RELEASED          | R. A | M.T | 16-04-13 |  |   |                                       |                         |   |
| △ | ECN No | REVISION RECORD 記 | DR   | CHK | DATE 年月日 |  |   |                                       |                         |   |

DO NOT SCALE DRAWING. THIS DRAWING CONTAINS INFORMATION THAT IS PROPRIETARY TO IRISO AND SHOULD NOT BE USED WITHOUT WRITTEN PERMISSION. 本図面は、イリソ電子工業(株)の所有する情報を含むもので当社の許可なく複製を禁止する。

REDUSED COPY