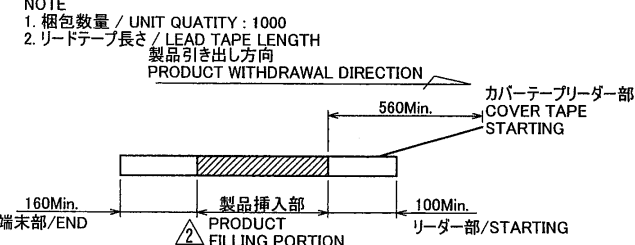
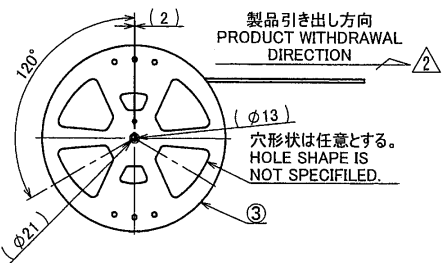
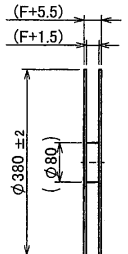
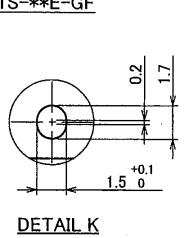
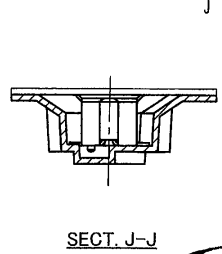
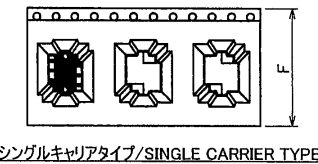


| 極数/CKT | 製品番号/PARTS No. | A    | B    | C    | D    | E    | F         | G |
|--------|----------------|------|------|------|------|------|-----------|---|
| 6      | 9851S-06Y931   | 7.2  | 8.8  | 11.5 | 21.5 | 24.0 | 2.0 ± 0.1 | 1 |
| 8      | 9851S-08Y931   | 9.2  | 10.8 |      |      |      |           |   |
| 10     | 9851S-10Y931   | 11.2 | 12.8 |      |      |      |           |   |
| 12     | 9851S-12Y931   | 13.2 | 14.8 | 14.2 | 28.4 | 26.0 | 32.0      | 2 |
| 14     | 9851S-14Y931   | 15.2 | 16.8 |      |      |      |           |   |
| 16     | 9851S-16Y931   | 17.2 | 18.8 |      |      |      |           |   |
| 18     | 9851S-18Y931   | 19.2 | 20.8 | 20.2 | 40.4 | 37.0 | 44.0      | 3 |
| 20     | 9851S-20Y931   | 21.2 | 22.8 |      |      |      |           |   |
| 22     | 9851S-22Y931   | 23.2 | 24.8 |      |      |      |           |   |
| 24     | 9851S-24Y931   | 25.2 | 26.8 | 26.2 | 52.4 | 49.0 | 56.0      | 4 |
| 26     | 9851S-26Y931   | 27.2 | 28.8 |      |      |      |           |   |
| 28     | 9851S-28Y931   | 29.2 | 30.8 |      |      |      |           |   |
| 30     | 9851S-30Y931   | 31.2 | 32.8 |      |      |      |           | 5 |



4. テープ幅24mm以下の場合、シングルキャリアとする。(図参照)  
 TAPE WIDTH UNDER 24mm SINGLE CARRIER (A DRAWING REFERENCE)



**ISSUED**  
 14.12.-3  
**IRISO**  
 ENG. DEPT.

|                               |  |                         |  |                            |  |              |  |                                   |  |
|-------------------------------|--|-------------------------|--|----------------------------|--|--------------|--|-----------------------------------|--|
| MATERIAL 材質                   |  | GENERAL TOLERANCES 一般公差 |  | SCALE 尺度                   |  | UNIT 単位      |  | TITLE 名称                          |  |
| ①カバーテープ/COVER TAPE : PET TYPE |  | DIM 寸法 ± 0.3            |  | DR 13/11/11                |  | mm           |  | 9851シリーズ ソケット エンボス 梱包品            |  |
| ②キャリアテープ/CARRIER TAPE : PS    |  | ANGLE 角度 ±              |  | T. Nakayama                |  | DSN 11/09/21 |  | SERIES 9851 SOCKET EMBOSS PRODUCT |  |
| ③リール/REEL : PS(黒/BLACK)       |  | 3RD. ANG. PROJ. 三角法     |  | CHK 11/11/13 S. Ura        |  | G. Sakae     |  | EDP No                            |  |
| FINISH 仕上げ                    |  |                         |  | APP 11/11/13 M. Yoshikawa  |  |              |  | PARTS No 部番                       |  |
|                               |  |                         |  | IRISO ELECTRONICS CO., LTD |  |              |  | IMSA-9851S-**Y931                 |  |
|                               |  |                         |  | イリソ電子工業株式会社                |  |              |  | DWG No 図番                         |  |
|                               |  |                         |  |                            |  |              |  | 120-109851-026                    |  |
|                               |  |                         |  |                            |  |              |  | REV. 3                            |  |

DO NOT SCALE DRAWING. THIS DRAWING CONTAINS INFORMATION THAT IS PROPRIETARY TO IRISO AND SHOULD NOT BE USED WITHOUT WRITTEN PERMISSION. 本図面は、イリソ電子工業(株)の所有する情報を含むもので当社の許可なく複製を禁止する。

REDUCED COPY