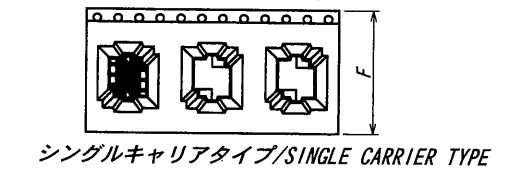
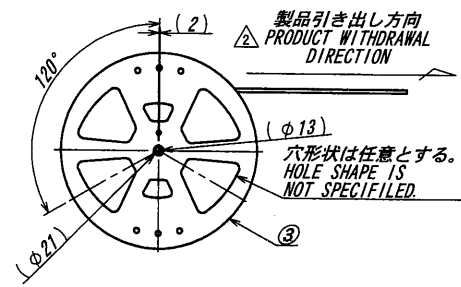
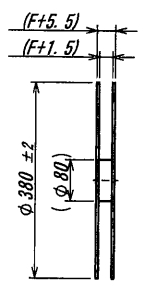
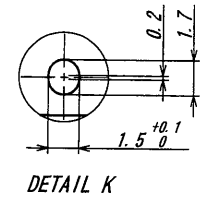
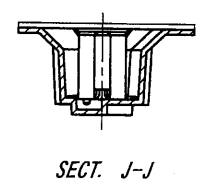
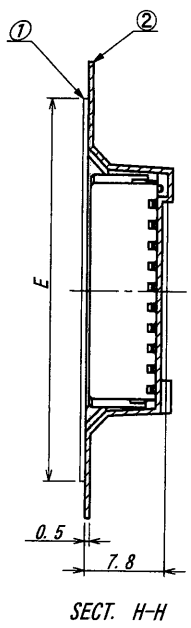
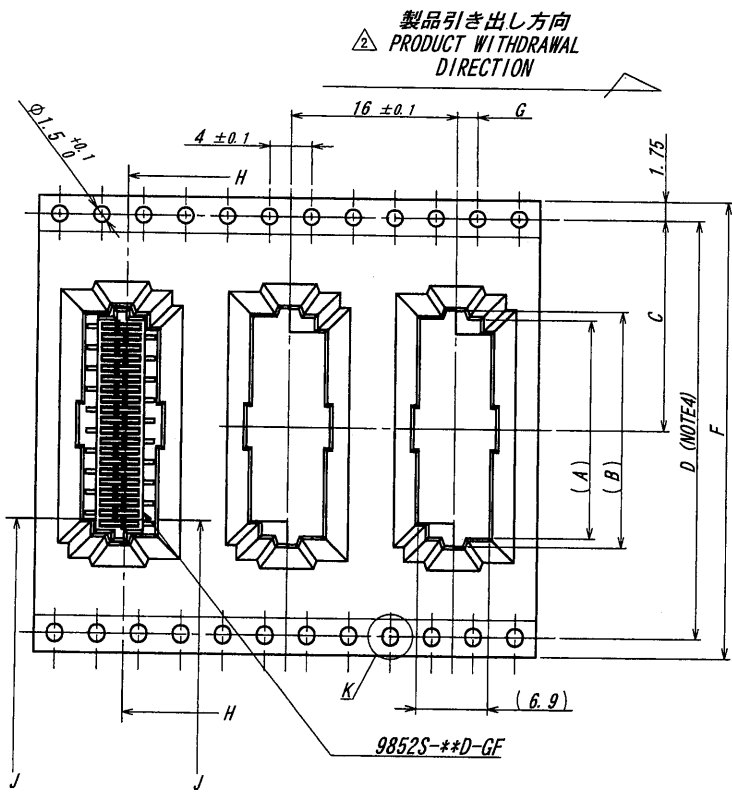
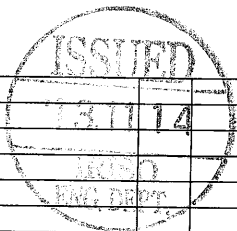


A B C D E F G H



| 極数/CKT | 製品番号/PARTS No. | A    | B    | C    | D    | E    | F  | G          |
|--------|----------------|------|------|------|------|------|----|------------|
| 6      | 9852S-06Y947   | 7.2  | 8.8  |      |      |      |    |            |
| 8      | 9852S-08Y947   | 9.2  | 10.8 | 11.5 |      | 21.5 | 24 |            |
| 10     | 9852S-10Y947   | 11.2 | 12.8 |      |      |      |    | 2.0 ± 0.1  |
| 12     | 9852S-12Y947   | 13.2 | 14.8 | 14.2 | 28.4 | 26   | 32 |            |
| 14     | 9852S-14Y947   | 15.2 | 16.8 |      |      |      |    |            |
| 16     | 9852S-16Y947   | 17.2 | 18.8 |      |      |      |    |            |
| 18     | 9852S-18Y947   | 19.2 | 20.8 |      |      |      |    |            |
| 20     | 9852S-20Y947   | 21.2 | 22.8 | 20.2 | 40.4 | 37   | 44 |            |
| 22     | 9852S-22Y947   | 23.2 | 24.8 |      |      |      |    | 2.0 ± 0.15 |
| 24     | 9852S-24Y947   | 25.2 | 26.8 |      |      |      |    |            |
| 26     | 9852S-26Y947   | 27.2 | 28.8 |      |      |      |    |            |
| 28     | 9852S-28Y947   | 29.2 | 30.8 | 26.2 | 52.4 | 49   | 56 |            |
| 30     | 9852S-30Y947   | 31.2 | 32.8 |      |      |      |    |            |

- NOTE
1. 梱包数量 / UNIT QUANTITY : 700
  2. リードテープ長さ / LEAD TAPE LENGTH  
製品引き出し方向 PRODUCT WITHDRAWAL DIRECTION  
カバーテープリーダ部 COVER TAPE STARTING  
560Min.  
製品挿入部 PRODUCT FILLING PORTION  
160Min. 100Min.  
端末部/END リーダ部/STARTING
  3. カバーテープの剥離強度 / COVER TAPE PEELING FORCE : 0.2~1.3N  
製品引き出し方向 PRODUCT WITHDRAWAL DIRECTION  
10°
  4. テープ幅24mm以下の場合、シングルキャリアとする。(図参照)  
TAPE WIDTH UNDER 24mm SINGLE CARRIER (A DRAWING REFERENCE)



|   |                 |                            |         |   |                               |  |  |
|---|-----------------|----------------------------|---------|---|-------------------------------|--|--|
| MATERIAL 材質   |                 | GENERAL TOLERANCES 一般公差    |         | SCALE 尺度                                  | UNIT 単位                       | TITLE 名称   |  |
| ①カバーテープ/COVER TAPE : PET TYPE<br>②キャリアテープ/CARRIER TAPE : PS<br>③リール/REEL : PS (黒/BLACK) |                 | DIM 寸法 ± 0.3<br>ANGLE 角度 ± |         | DR '13-11-11<br>T. Nakayama               | mm                            | 9852シリーズ ソケット エンボス梱包品<br>△ SERIES 9852 SOCKET EMBOSS PRODUCT |  |
| FINISH 仕上げ  |                 | 3RD. ANG. PROT. 三角法        |         | CHK Y11'13 S. Ueda                        | APP '11-07-12<br>H. Kobayashi | EDP No   |  |
| 45250   | NOTE REV        | T. N                       | S. Ueda | IRISO ELECTRONICS CO., LTD<br>イリソ電子工業株式会社 |                               | PARTS No 部番<br>△ IMSA-9852S-#Y947                            |  |
| 41082   | REVISED         | T. N                       | M. T    |   |                               | DWG No 図番<br>△ 120-109852-025                                |  |
| ECN No  | REVISION RECORD | DR                         | CHK     |   |                               | REV.<br>2  |  |

DO NOT SCALE DRAWING. THIS DRAWING CONTAINS INFORMATION THAT IS PROPRIETARY TO IRISO AND SHOULD NOT BE USED WITHOUT WRITTEN PERMISSION. 本図面は、イリソ電子工業(株)の所有する情報を含むもので当社の許可なく複製を禁止する。

REDUCED COPY