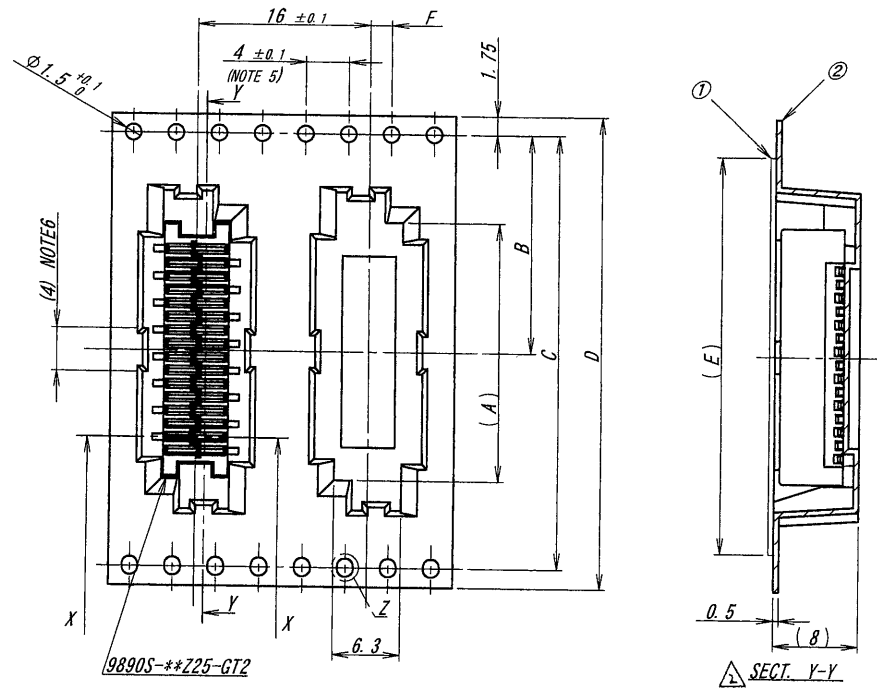
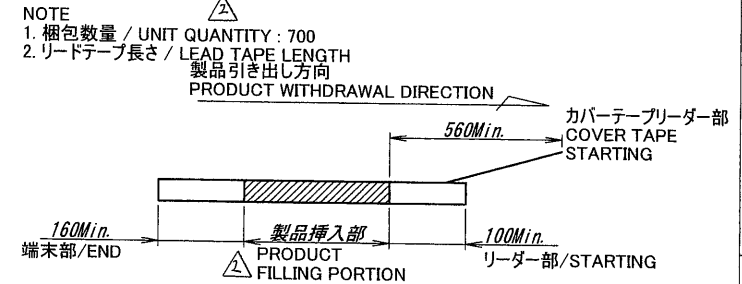


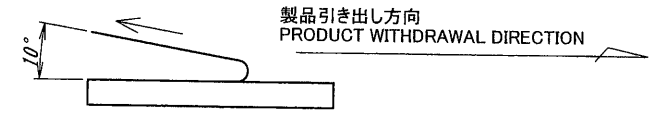
製品引き出し方向
PRODUCT WITHDRAWAL DIRECTION



極数/CKT	製品番号/PARTS No.	A	B	C	D	E	F
6	9890S-06Y985	11.5	14.2	28.4	32	26	2±0.1
8	9890S-08Y985	14.0					
10	9890S-10Y985	16.5	20.2	40.4	44	37	2±0.15
12	9890S-12Y985	19.0					
14	9890S-14Y985	21.5					
16	9890S-16Y985	24.0					
18	9890S-18Y985	26.5	26.2	52.4	56	49	2±0.15
20	9890S-20Y985	29.0					
22	9890S-22Y985	31.5					
24	9890S-24Y985	34.0					
26	9890S-26Y985	36.5	34.2	68.4	72	65	2±0.15
28	9890S-28Y985	39.0					
30	9890S-30Y985	41.5					

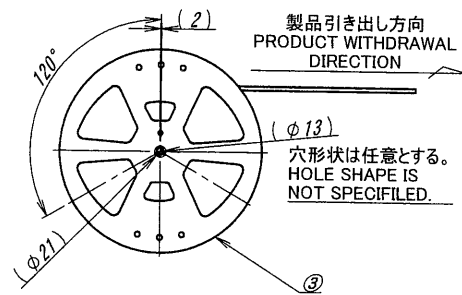
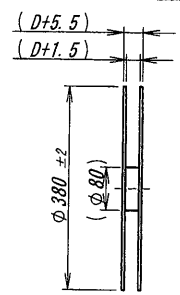
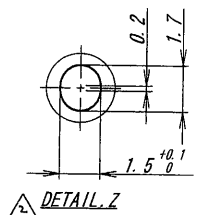
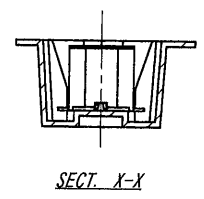


3. カバーテープの剥離強度 / COVER TAPE PEELING FORCE : 0.2~1.3N



4. 10ピッチの累積許容は±0.2mmとする。
THE TOTAL TOLERANCE OF 10 PITCH IS ±0.2.

5. 適用極数/APPLY TO : 10~30PIN



ISSUED
12.11.27
IRISO
ENG. DEPT.

△						MATERIAL 材質	GENERAL TOLERANCES 一般公差	SCALE 尺度	UNIT 単位	TITLE 名称
△						①カバーテープ/COVER TAPE : PET TYPE	DIM 寸法 ± 0.3	DR /12-11-2	mm	9890シリーズ ソケット エンボス 梱包品
△						②キャリアテープ/CARRIER TAPE : PS	ANGLE 角度 ±	T. HAYASHI	J. Sakae	SERIES 9890 SOCKET EMBOSS PRODUCT
△						③リール/REEL : PS(黒/BLACK)	3RD. ANG. PROJ. 三角法	CHK YZ 1/2 K. Kobayashi	APP YZ 1/2 H. Takagi	EDP No
△						FINISH 仕上げ		IRISO ELECTRONICS CO., LTD		PARTS No 部番
△								IRISO電子工業株式会社		IMSA-9890S-**-Y985
△	427/6	REVISED	T.H.	K.K.	12-11-1					DWG No 図番
△	ECN No	REVISION RECORD	DR	CHK	DATE					120-109890-077
△										REV. 2

DO NOT SCALE DRAWING
THIS DRAWING CONTAINS INFORMATION THAT IS PROPRIETARY TO IRISO AND SHOULD NOT BE USED WITHOUT WRITTEN PERMISSION. 本図面は、イリソ電子工業(株)の所有する情報を含むもので当社の許可なく複製を禁じます。

IRISO COPY