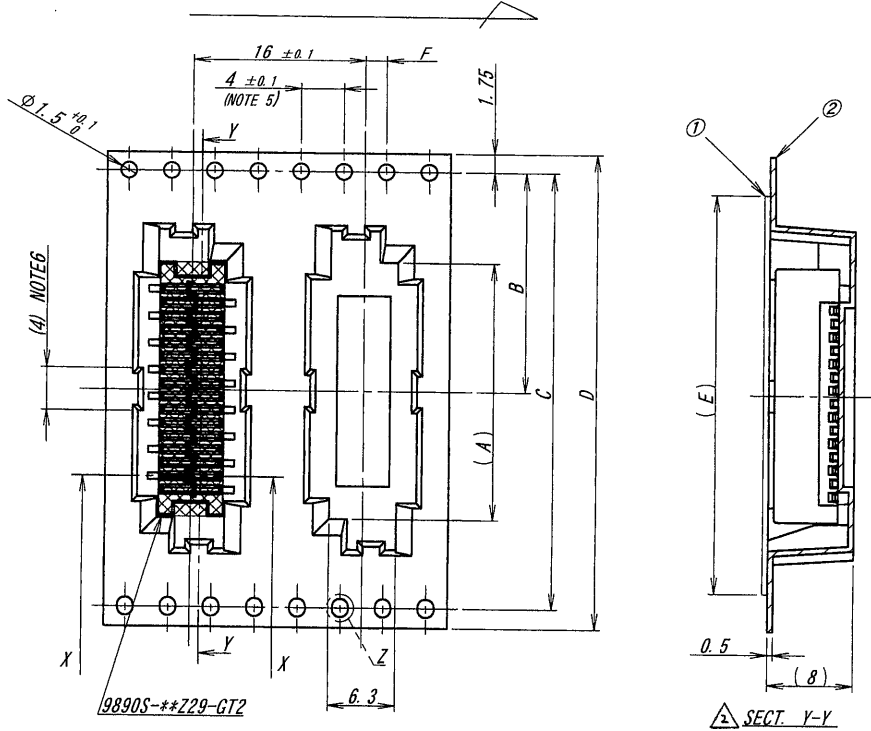
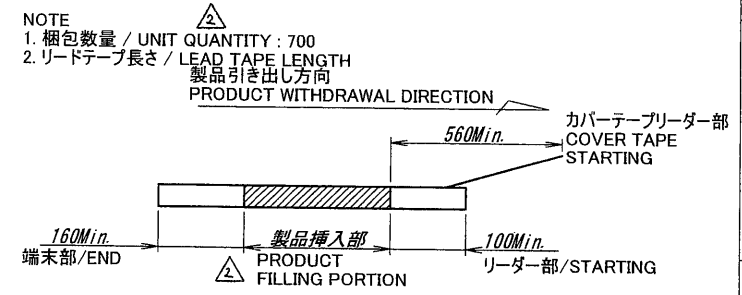


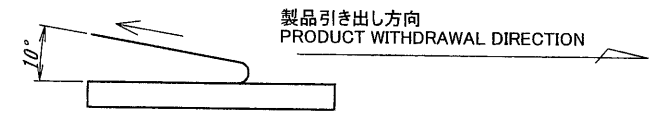
製品引き出し方向
PRODUCT WITHDRAWAL
DIRECTION



| 極数/CKT | 製品番号/PARTS No. | A | B | C | D | E | F |
|--------|----------------|------|------|------|----|----|----------|
| 6 | 9890S-06Y987 | 11.5 | 14.2 | 28.4 | 32 | 26 | 2 ± 0.1 |
| 8 | 9890S-08Y987 | 14.0 | | | | | |
| 10 | 9890S-10Y987 | 16.5 | 20.2 | 40.4 | 44 | 37 | |
| 12 | 9890S-12Y987 | 19.0 | | | | | |
| 14 | 9890S-14Y987 | 21.5 | 26.2 | 52.4 | 56 | 49 | 2 ± 0.15 |
| 16 | 9890S-16Y987 | 24.0 | | | | | |
| 18 | 9890S-18Y987 | 26.5 | 34.2 | 68.4 | 72 | 65 | |
| 20 | 9890S-20Y987 | 29.0 | | | | | |
| 22 | 9890S-22Y987 | 31.5 | | | | | |
| 24 | 9890S-24Y987 | 34.0 | | | | | |
| 26 | 9890S-26Y987 | 36.5 | | | | | |
| 28 | 9890S-28Y987 | 39.0 | | | | | |
| 30 | 9890S-30Y987 | 41.5 | | | | | |



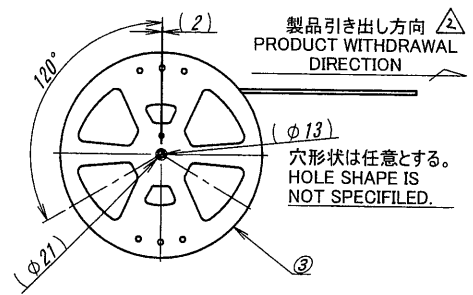
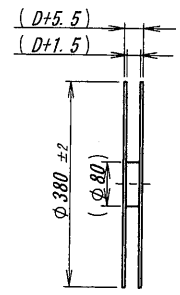
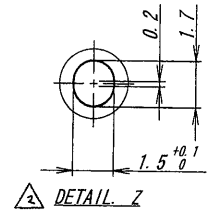
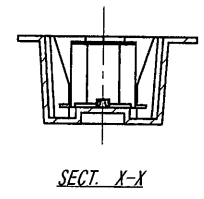
3. カバーテープの剥離強度 / COVER TAPE PEELING FORCE : 0.2~1.3N



② 4 10ピッチの累積許容は±0.2mmとする。
THE TOTAL TOLERANCE OF 10 PITCH IS ±0.2.
5. 適用極数/APPLY TO : 10~30PIN

9890S-**Z29-GT2

△ SECT. Y-Y



製品引き出し方向
PRODUCT WITHDRAWAL
DIRECTION
穴形状は任意とする。
HOLE SHAPE IS
NOT SPECIFIED.

ISSUED
12.11.27
IRISO
ENG. DEPT.

| | | | | | | | | | | | |
|---|--|--|--|---|--|---|--|------------|--|---|--|
| MATERIAL 材質 ①カバーテープ/COVER TAPE : PET TYPE ②キャリアテープ/CARRIER TAPE : PS ③リール/REEL : PS(黒/BLACK) | | | | GENERAL TOLERANCES 一般公差 DIM 寸法 ± 0.3 ANGLE 角度 ± | | SCALE 尺度 / UNIT 単位 DR '12-11-2 T. HAYASHI CHC '12 '1/2 K. Kobayashi | | UNIT 単位 mm | | TITLE 名称 △ 9890シリーズ ソケット エンボス 梱包品 SERIES 9890 SOCKET EMBOSS PRODUCT | |
| FINISH 仕上げ | | | | 3RD. ANG. PROJ. 三角法 | | APP '12 '1/2 M. Tadagi | | EDP No | | PARTS No 部番 △ IMSA-9890S-**Y987 | |
| LIR 記号 ECN No REVISION RECORD 事 DR CHK DATE 年月日 42716 REVISED T.H K.K '12-11-2 | | | | IRISO ELECTRONICS CO., LTD イリソ電子工業株式会社 | | DWG No 図番 △ 120-109890-079 | | REV. 2 | | | |