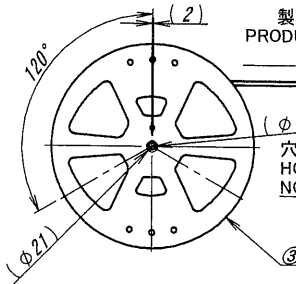
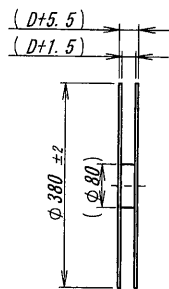
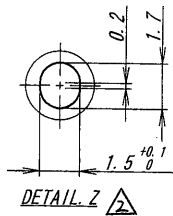
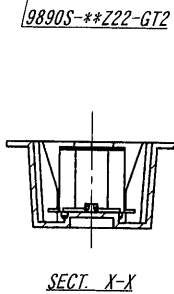
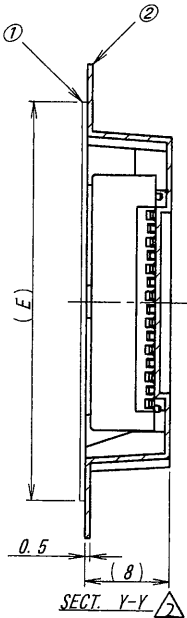
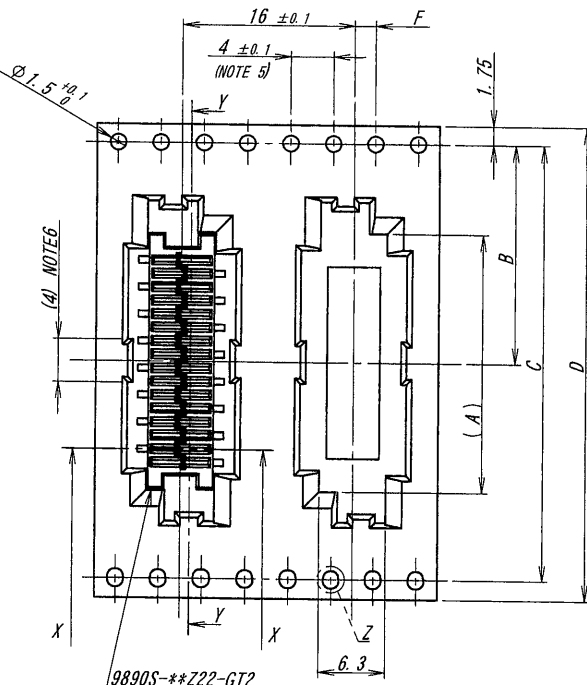


製品引き出し方向  
PRODUCT WITHDRAWAL  
DIRECTION

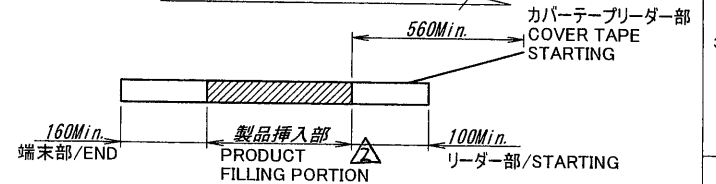


製品引き出し方向  
PRODUCT WITHDRAWAL  
DIRECTION

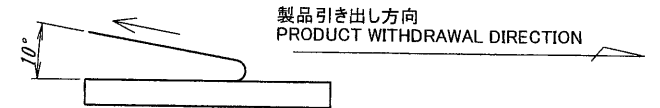
穴形状は任意とする。  
HOLE SHAPE IS  
NOT SPECIFIED.

極数/CKT	製品番号/PARTS No.	A	B	C	D	E	F
6	9890S-06Y996	11.5	14.2	28.4	32	26	2±0.1
8	9890S-08Y996	14.0					
10	9890S-10Y996	16.5					
12	9890S-12Y996	19.0	20.2	40.4	44	37	
14	9890S-14Y996	21.5					
16	9890S-16Y996	24.0					
18	9890S-18Y996	26.5					
20	9890S-20Y996	29.0	26.2	52.4	56	49	2±0.15
22	9890S-22Y996	31.5					
24	9890S-24Y996	34.0					
26	9890S-26Y996	36.5					
28	9890S-28Y996	39.0					
30	9890S-30Y996	41.5					

NOTE  
1. 梱包数量 / UNIT QUANTITY : 700  
2. リードテープ長さ / LEAD TAPE LENGTH  
製品引き出し方向  
PRODUCT WITHDRAWAL DIRECTION



3. カバーテープの剥離強度 / COVER TAPE PEELING FORCE : 0.2~1.3N



4. 10ピッチの累積許容は±0.2mmとする。  
THE TOTAL TOLERANCE OF 10 PITCH IS ±0.2.  
5. 適用極数/APPLY TO : 10~30PIN

ISSUED  
12.11.-5  
IRISO  
ENG. DEPT.

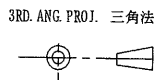
MATERIAL 材質  
①カバーテープ/COVER TAPE : PET TYPE  
②キャリアテープ/CARRIER TAPE : PS  
③リール/REEL : PS(黒/BLACK)

GENERAL TOLERANCES 一般公差  
DIM 寸法 ± 0.3  
ANGLE 角度 ±

SCALE 尺度 / UNIT 単位 mm  
DR 12-11-2 DSN 11-12-15  
Y. Suzuki J. Sakaue  
CHK 12 APP 72  
1/5 K. Kobayashi 1/5 M. Takagi

TITLE 名称  
9890シリーズ ソケット エンボス 梱包品  
SERIES 9890 SOCKET EMBOSS PRODUCT

FINISH 仕上げ



IRISO ELECTRONICS CO., LTD  
IYI電子工業株式会社

EDP No  
PARTS No 部番  
IMS A-9890S-\*\*Y996

DWG No 図番  
120-109890-086  
REV. 2

DO NOT SCALE DRAWING.  
THIS DRAWING CONTAINS INFORMATION THAT IS PROPRIETARY TO IRISO AND SHOULD NOT BE USED WITHOUT WRITTEN PERMISSION. 本図面は、イリソ電子工業(株)の所有する情報を含み、その当社の許可なく複製を禁止する。